

Kenilworth Public Schools

Our Roundup of This Week's Important Information

NEW UPDATES & CORRESPONDENCE

[Superintendent's Update - Learning Acceleration](#)

[Brearley MS Update - May 20th](#)

[Harding School Update - May 20th](#)

[Weekly COVID-19 Dashboard](#)

[Kenilworth Shouts Out Campaign Form](#)

[Fall Athletic Registration Open - Family ID](#)

[Brearley Theatre Presents *Pop Star*](#)

INFORMATION WORTH RESHARING

[DBMS Back2Basics Summer Enrichment Program](#)

[BOE Bulletin - May 2021](#)

[Kenilworth PBA Annual Fishing Derby](#)

[Brearley Middle School Update](#)

[Middle School Transition Experience: A Three-Part Series for Parents](#)

- [Watch Part I: Norms & Expectations](#)
 - [Watch Part II: Scheduling](#)
 - [Watch Part III: Student Life](#)
-

FUNDRAISING SUPPORT

[HES Student Council Fundraiser & Information Page](#)

[Harding PTO Fundraiser Apex Run](#)

[DBMHS PTO Tricky Tray](#)

[DBMHS Virtual Tricky Tray Tickets](#)

PARENT SUPPORT

[CarePlus Parent Workshop - PerformCare & NJ Children's System of Care](#)

[Social Emotional Health Newsletter - May](#)

[May is Mental Health Month - Toolkit](#)

[RWJBarnabas Health & Healing Resources](#)

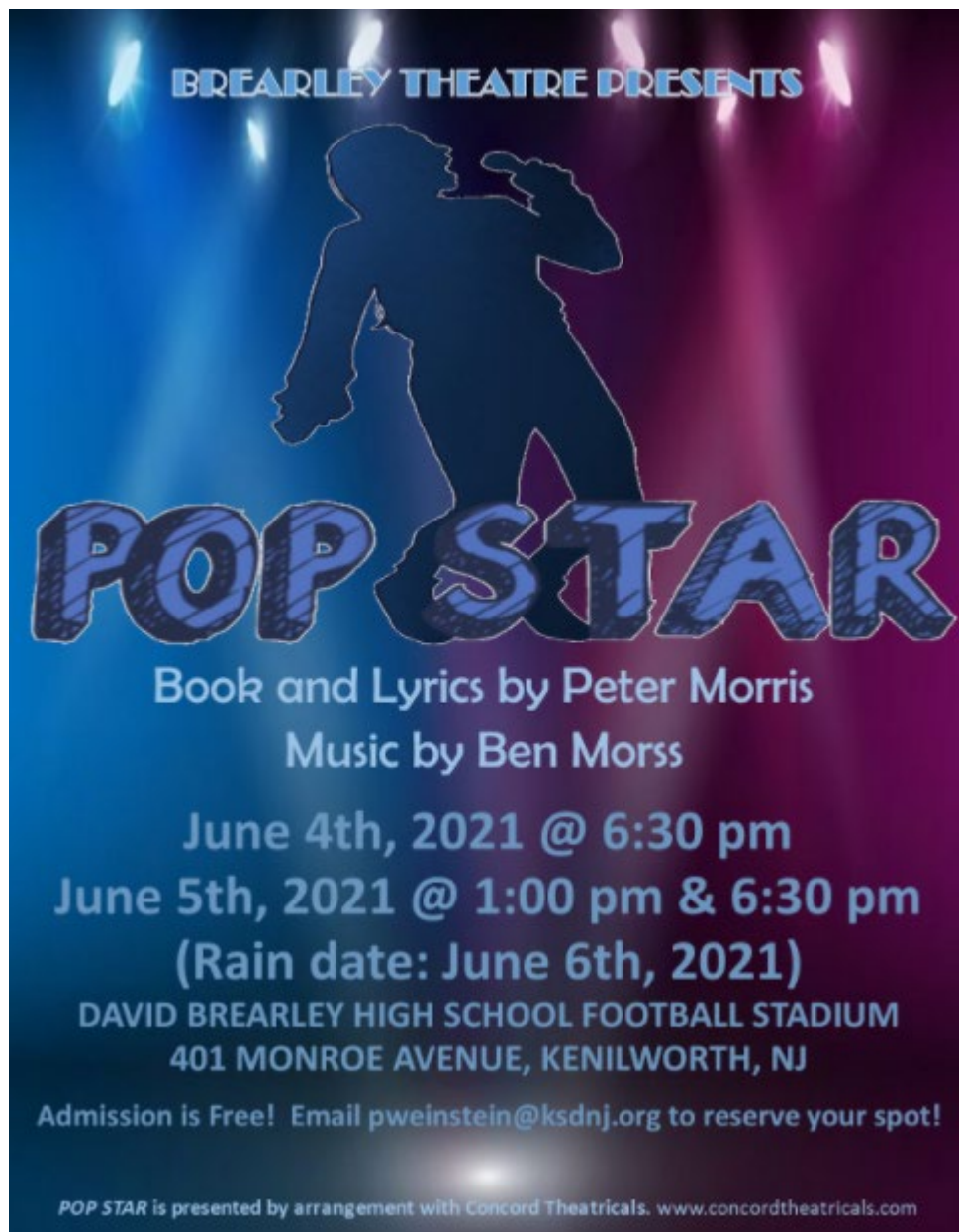
[NJ Art Therapy Association](#)

[Home Energy Assistance Program](#)

[Utility, Housing, and Employment Assistance](#)

[NJ Early Intervention System Assistance for Children Birth - 36 Months](#)

[NJ COVID-19 Vaccine Locations](#)



Have a great weekend!

The Purpose of the Friday Folder: The District sends a Friday Folder each Friday (when needed) that contains links to important, but not urgent, school and community news that may be of interest to you. The Friday Folder is intended to keep you informed while mainstreaming communication efforts so as not to overwhelm your inbox.